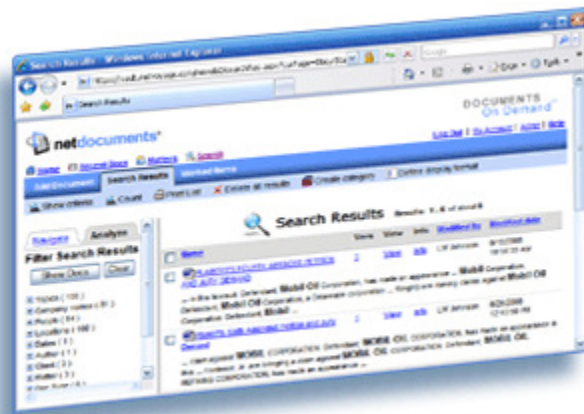


Make better, faster decisions with NDSearch, an enterprise-class search platform embedded in NetDocuments and available to all users. Improve productivity and discover information with more intelligence and more power than you've ever had before. Take advantage of this fully-featured search experience that will grow and evolve with your business.



## Simplicity and Power Combined

Your knowledge workers will make better, faster decisions by easily finding and analyzing accurate business information from across the organization. The role of search is expanding fast and people expect quick and decisive direction in locating the information they are seeking. And why not, they get it on the Web, so why not in the office?

NetDocuments NDSearch brings the capabilities of Web-type search to the office with simple and easy-to-use search combined with more inherent power and intelligence than the average office worker has experienced before from any traditional document management and other legacy applications.

### MAKE SMARTER DECISIONS

As documents, emails, images, records, etc., are created, edited and continued to be collected in a single, Software-as-a-Service (SaaS) secured repository and across the global span of where your knowledge workers reside, the NetDocuments NDSearch engine is always working, indexing and available anywhere, anytime. NDSearch helps you find what you need fast and get to real-time results so you can make smarter and more accurate decisions because you now get to the right information, at the right time--and while on the journey discover even new information.

NDSearch finds the highest quality and most relevant documents for you as it factors in all the variables for each query. You can then navigate the search results easily and clearly by reading the location of your query in the context of the page, referred to as document "snippets."

Click on the view link to scroll through each document to read its content in an HTML viewer, or highlight the documents you are interested in, select the "review" feature to not only view the list of documents, but also add comments, group into folders and organize the documents you need for future access and decision-making. Select a document and request to see other similar documents or analyze the content by extracting key topics. Save your results as a Category for quick and easy access in the future.

*The possibilities are endless.*

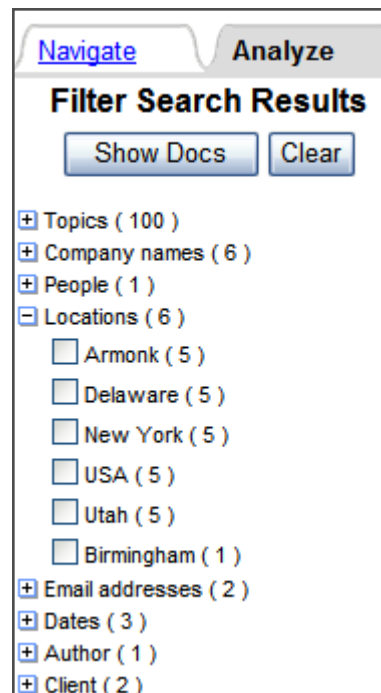
### MAKE UNKNOWN CONTENT DISCOVERABLE

NDSearch is an underlying core component of NetDocuments serving its users with quick access to targeted discovery--discovery of the known. NDSearch Analysis, an add-on service, encourages discovery and exploration of the unknown.

NDSearch Analysis increases awareness of content by guiding a user to additional content choices that match his/her interests. This automatic exposure to unknown content increases awareness to existing knowledge, discovery and improved satisfaction with the searching experience.

For example, a search resulting in 50 hits will also present a navigational list highlighting the number of documents that reference specific organizations, people, locations, dates, email addresses, and the customer's own customized profile values (i.e., doc type, clients) that exist within the scope of documents gathered. It will also suggest topics based on an underlying algorithm, as well as offer the ability to find similar documents to any information discovered most relevant to the user's interest.

The power of NDSearch Analysis is uniquely highlighted on a NetDocuments Workspace page as it automatically extracts and displays relevant topics contained within the workspace. If workspaces are defined by customer/client, the user simply goes to the workspace and can instantly analyze the content to locate names, dates, email addresses, etc., for the respective client.



## MAKE CONTENT GLOBALLY ACCESSIBLE

NDSearch is designed for document discovery, locating information from other knowledge workers and from other projects you were not aware existed. Sharing work product across departments and across offices unites your organization and delivers the power of many to the power of one.

NetDocuments single repository and single search across your offices and for all your information contained in documents, emails, records, images, etc., appeals to those responsible for corporate compliance, governance, intellectual asset management, collaboration, litigation, and general data access as well.

IT administrators will enjoy the ease of administration of the Software-as-a-Service model, relieving the overhead previously required from legacy DMS regarding search optimization, data integrity, index rebuilding, application maintenance, and disk backup. Because NetDocuments is hosted, it's always up to date, backed up, secure and available, letting you focus on what you do best--your business.

## NDSEARCH FEATURES

**Search Ranking** - Search Ranking finds the highest quality and most relevant documents. NDSearch takes into consideration relative word ordering, word proximity, word frequency, position in text, etc.

**Document Snippets** - Judge relevancy of results more easily via dynamically generated snippets showing your query in the context of the page.

**Automatic Spell-check** - Avoid missing results through typos or misspellings as NDSearch automatically suggests corrections, even on company-specific words and phrases.

**Wild Cards** - query terms text\*, \*text, te?t, are supported.

**Advanced Boolean operators** enable "and", "or", "not" query operators. Query terms can require the inclusion or exclusion of desired values.

**Parenthesis** determines levels for precedence. Unlimited number of parenthesis is supported.

**Proximity** control for searching can be based on physical word distances.

**Lemmatization or Advanced Stemming** allows a search on "mouse" and finding references to both "mouse" and "mice" or searching "better" and finding "good," "better" or "best." Lemmatization allows for matching with grammatical variations of words.

**Multiple Languages** - Supports multiple languages UTF-8 character set, including Western European, Chinese, and Japanese.

## NDSEARCH ANALYSIS FEATURES (ADD-ON FEES APPLY)


**Entity Extraction or Analyze Result** - NetDocuments will automatically extract from the document(s) text the following information: topics, company names, individual names, geographical locations, dates, and email addresses.

**Profile-based Extraction** - Any custom profile information can be used to extract from the document(s) text.

**Workspace Content Analysis** - Extract and analyze topics and entities at the workspace level across all documents in that workspace.

**Find Similar Document** - Locates documents similar to any document selected.

### DOCUMENT SNIPPETS

 [Dowlen Town 1 Center Lease](#) [View](#) [Info](#) LW Johnson 6/14/2005 5:02:01 PM

... In addition to the remedies provided in **Article 19** of this Lease, Landlord may, but is not obligated to ... that part of such tax year covered by the **Lease Term** bears to a full tax year . | **ARTICLE 19 . DEFAULT BY TENANT AND REMEDIES . 19 ...**


**Results: 1 - 1 of about 1**


### LEMMATIZATION AND SEARCH RANKING

Include alternate word forms (Search all fields)

Sort by  Relevance  Modified date  Name

### MULTIPLE WORD AND PROXIMITY

Search Scope:  **Olsen Clark Davies**

Cabinet:  **\_Internal DMS**

"article 19" w/20 lease

